

ELECTRIC SELF-PROPELLED ELEVATING WORK PLATFORM



SSL SERIES



▲ SSL-3370
Max. Platform Height 10M
(Max. Working Height 12M)

Designed for working in the high places such as building maintenance, machinery maintenance, construction, cleaning, and photography / cinematography / broadcasting shooting. Soosung's electric scissor lifts provide the most stable work platform for various applications.

■ SSL- 1932/ 2646/ 3370

- Roll-out deck extension (Standard)
- Tight turning radius
- 110/220 volt AC outlet on platform
- 24V battery and built-in battery charger
- Automatic parking brake
- One-hand joystick with proportional controls
- Emergency stop switch & Manual lowering valve



▶ Hydraulic Valve

- Hydraulic and electric control system
- Control box designed for easy maintenance



▶ Electric Control System



▶ Emergency Lowering Valve



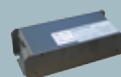
▶ Drum Brake applied



▶ Joystick provides precise and simultaneous travel control



- Battery
- Built-in Charger
- Safety Level Sensor
- Electric Outlet Socket



ELECTRIC SELF-PROPELLED ELEVATING WORK PLATFORM



SSL SERIES



SSL-1932 ▶
Max. Platform Height 5.8M
(Max. Working Height 7.8M)



◀ SSL-2646
Max. Platform Height 7.9M
(Max. Working Height 9.9M)

■ Specifications

Model		SSL-1432	SSL-1932	SSL-2046	SSL-2646	SSL-3370	SSL-4070
Height	Working:Max	6.49m	7.8m	8.07m	9.9m	12m	14m
	Platform:Max	4.49m	5.8m	6.07m	7.9m	10m	12m
	Platform:Min	0.9m	1.01m	1.02m	1.16m	1.66m	1.85m
	Stowed	2.00m	2.11m	2.12m	2.26m	2.76m	2.95m
Overall Length		1.85m	1.85m	2.39m	2.39m	3.51m	3.51m
Overall Width		0.82m	0.82m	1.14m	1.14m	1.72m	1.72m
Platform	Size (L x W)	0.71 x 1.61m		1.13 x 2.18m		1.50 x 3.3m	
	Length of Ext. Platform	0.85m	0.85m	0.85m	0.85m	1.2m	1.2m
Load Capacity	Main Platform	270kg	227kg	450kg	390kg	600kg	300kg
	Ext. Platform	113kg	113kg	136kg	136kg	156kg	156kg
Wheelbase		1.32m		1.72m		2.5m	
Wheel Tread		0.72m		1.04m		1.49m	
Ground Clearance		0.08m		0.08m		0.19m	
No. of boarding allowed /Person(80kg.)		1		2		3	
Turning Radius	Inside Curve	1.44m		2.12m		3.35m	
	Outside Curve	1.74m		2.74m		4.85m	
Travel Speed	Elevated	0.8km/Hr		0.8km/Hr		0.9km/Hr	
	Low	2km/Hr		1.8km/Hr		0.9km/Hr	
	High	3km/Hr		2.5km/Hr		2.8km/Hr	
	Gradeability	20%					
Lift/Lower Speed (Max Load)		20/48 Sec	25/52 Sec	40/54 Sec	49/56 Sec	60/50 Sec	63/54 Sec
Battery		24V (4 x 6V 220AH)		24V (8 x 6V 220AH)		24V (8 x 6V 220AH)	
Battery Charger		1 Ø x 220V, 50 / 60Hz (30amp)		1 Ø x 220V, 50 / 60Hz (40amp)		1 Ø x 220V, 50 / 60Hz (40amp)	
Tire (Solid Tires)		Ø358 x W102		Ø405 x W116		Ø676 x W246	
Drive System		Hydraulic Front-drive		Hydraulic Front-drive		DC Geared Motor Rear-drive	
Brake		Hydraulic					
Weight (Incl. Battery)		1,204kg	1,267kg	2,174kg	2,375kg	3,970kg	4200kg

※ The above appearance and specifications are subject to change without prior notice.